

6.1 DIN-Covers

acc. DIN 28124 part 3

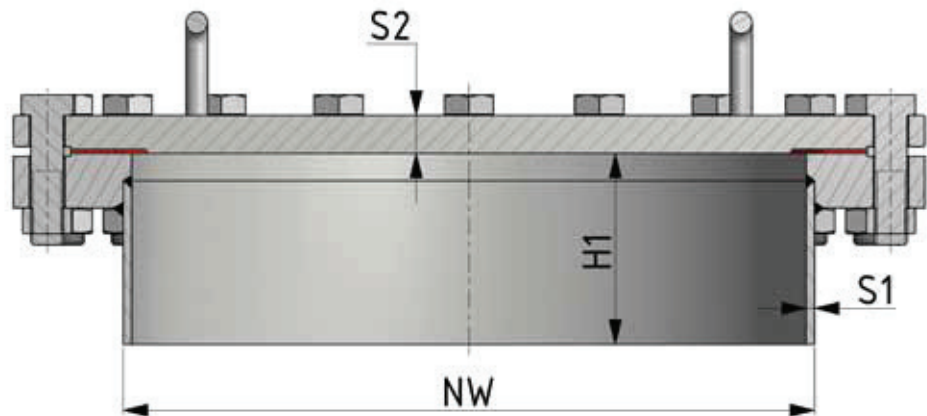
Standard design

- Wetted material: 1.4571 or 1.4404
Attachment part: 1.4301
- Gasket: Klingersil C-4400
- With flat gasket surface (shape MH)
- Without hinge, with two handles on the lid
- Neck length 200 mm
- Surface quality: unpolished, glass-bead blasted, from NW600 unpolished, pickled
- With approval (Modul G) acc. PED 97/23/EC
- Design Code: AD-2000-Merkblatt



Options

- Wetted materials: 1.4435 BN2, 1.4539, 1.4529, 1.4462, 1.4429, HC-22, HC-276, HC-2000, etc.
- Various shapes of gasket surfaces
- Intermediate sizes
- Various gasket qualities
- Various surface qualities (glass-bead blasted, pickled or polished up to $Ra < 0,2\mu m$)
- Neck length up to 2000 mm, thickness up to 20mm
- Conical design of the neck (up to max. 8 mm neck thickness)
- Installation of nozzles (sightglasses, TC-ferrules (DIN32676), HZ-Connect, etc.)
- With various limit- or proximity-switches
- With safety-grill or safety-cross
- Attachment parts in other materials
- Swivel-feature acc. DIN 28124-4 (horizontal or vertical)
- etc.



zimmerlin
EDELSTAHL-TECHNIK



Zimmerlin GmbH
Edelstahl-Technik
Frohmatenstr. 19
D-79268 Bötzingen

Tel. +49(0)7663-6088-0
Fax +49(0)7663-6088-88
info@zimmerlin.de
www.zimmerlin.de

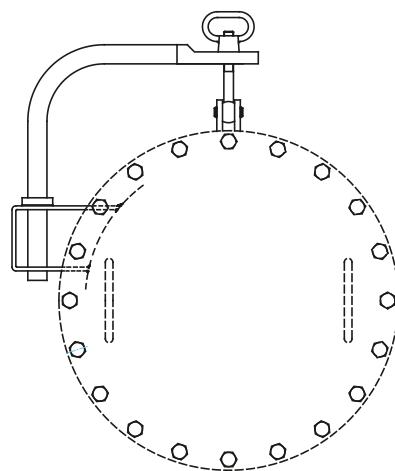


Stand: Juni 2015

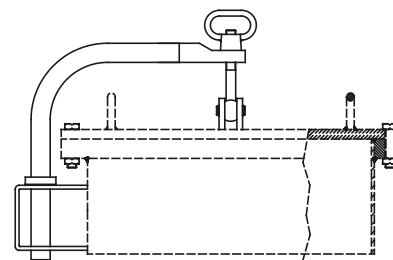
Article No.	NW	MAWP [bar] at 50/-10°C	MAWP [bar] at 120/-10°C	MAWP [bar] at 200/-10°C	MAWP [bar] at 250/-10°C	MAWP [bar] at 300/-10°C	Neck thickness S1 [mm]	Number of screws	Lid thickness S2 [mm] (1.4571)	Weight [kg]	Price in EUR
221012412	200	10	9	8	7	6	6	12x M16	15	27	
221612412	200	16	14	13	11	10	8	12x M16	20	33	
222512412	200	25	22	20	17	15	8	12x M16	25	35	
231012416	300	10	9	8	7	6	6	16x M20	15	47	
231612416	300	16	14	13	11	10	8	16x M20	20	56	
232512416	300	25	22	20	17	15	8	16x M20	25	61	
241012420	400	10	9	8	7	6	6	20x M20	25	87	
241612420	400	16	14	13	11	10	8	20x M24	30	104	
242512420	400	25	22	20	17	15	10	20x M30	35	154	
251012420	500	10	9	8	7	6	6	20x M24	25	149	
251612420	500	16	14	13	11	10	8	20x M24	30	146	
252512420	500	25	22	20	17	15	10	20x M27	35	187	
261012424	600	10	9	8	7	6	6	24x M20	30	158	
261612424	600	16	14	13	11	10	8	24x M24	35	209	
262512424	600	25	22	20	17	15	10	24x M30	40	293	
281012432	800	10	9	8	7	6	8	36x M24	40	356	
281612436	800	16	14	13	11	10	8	36x M30	50	459	
282512436	800	25	22	20	17	15	10	36x M36	60	564	

Davit Arms

Article No.	Description	Price in EUR
100 28124-4H	Davit Arm acc. DIN 28124-4 horizontal (up to NW600)	
100 28124-4V	Davit Arm acc. DIN 28124-4 vertical (up to NW600)	
200 28124-4H	Davit Arm acc. DIN 28124-4 horizontal (from NW600)	
200 28124-4V	Davit Arm acc. DIN 28124-4 vertical (from NW600)	



vertical design



horizontal design

